

# BOND CONSTRUCTION UPDATE

January 2025

#ThankYouVoters

# 2019 - \$295 M BOND





# 2019 BOND SUMMARY

---

- New Large-Capacity High School - COMPLETE
- Waller Junior High Addition & Renovation - COMPLETE
- Renovate WHS to Schultz Junior High - COMPLETE
- Renovate SJH to Holleman Elementary - COMPLETE
- Land, Buses, Technology, Security - COMPLETE
- Stadium LED lighting Upgrade - COMPLETE
- Stadium Video Board & Sound System - COMPLETE
- \* Stadium Replacement Turf - March-May 2025
- \* Stadium HVAC Upgrades - Summer 2025

# 2022 - \$363 M BOND





- Lowe Elementary (#6) - COMPLETE
- McReavy Elementary (#7) - COMPLETE
- Cure Elementary (#8) - Opening Summer 2025
- Smith Andrews Ag Science Complex - COMPLETE, Opening Feb 2025
- Education Service Center and Transportation - Opening summer-fall 2025
- Priority 1 District Facility Upgrades - In progress, Complete in fall 2025.
- District HVAC upgrades - completing design for summer 2025 work.

# LOWE AND MCREAVY ELEMENTARY SCHOOLS





- Both campuses opened in August 2024.
- Punch List work is ongoing and close to completion.
- HVAC test & balance and Building Commissioning are nearing completion.
- Interior graphics package is in production.

# SMITH ANDREWS AG SCIENCE COMPLEX





- Punch list is being completed.
- Furniture and equipment has been installed.
- Animal paneling has been installed.
- Final walkthroughs are being conducted.
- City of Waller has issued TCO.

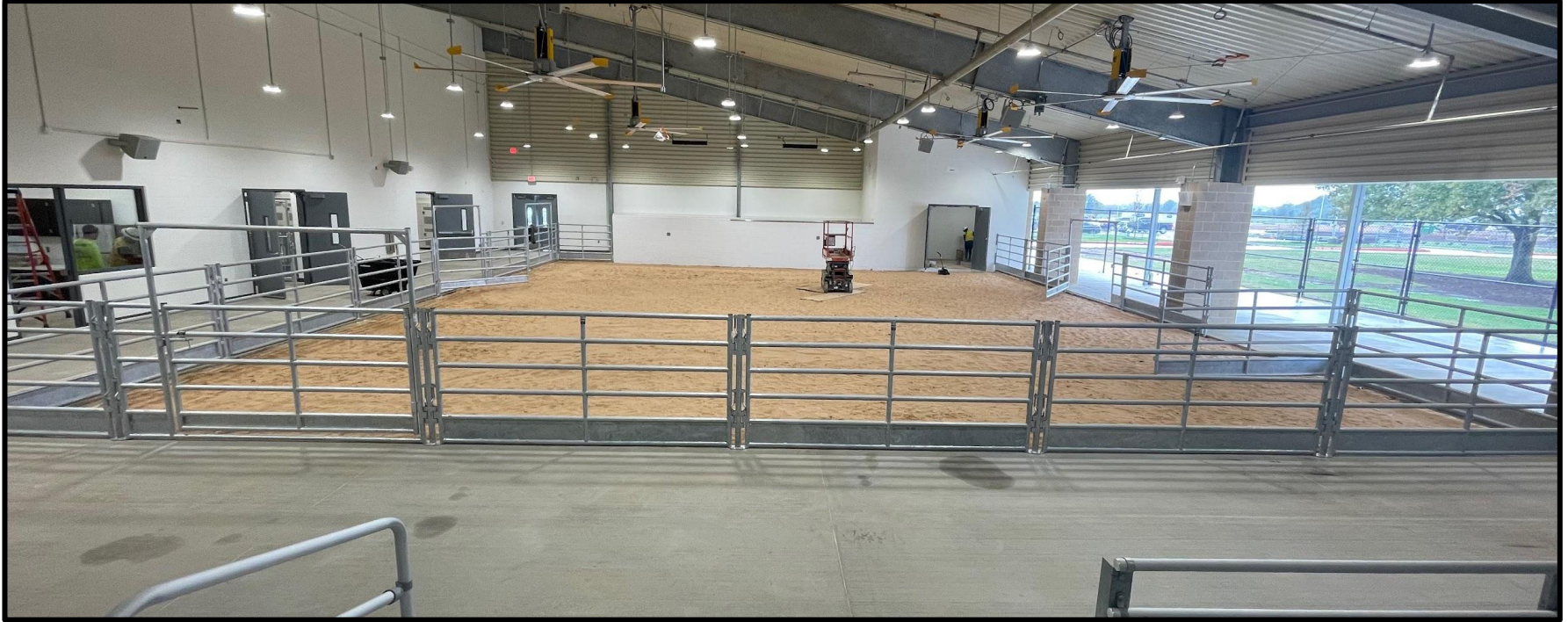
# Ag Barn



Front Elevation

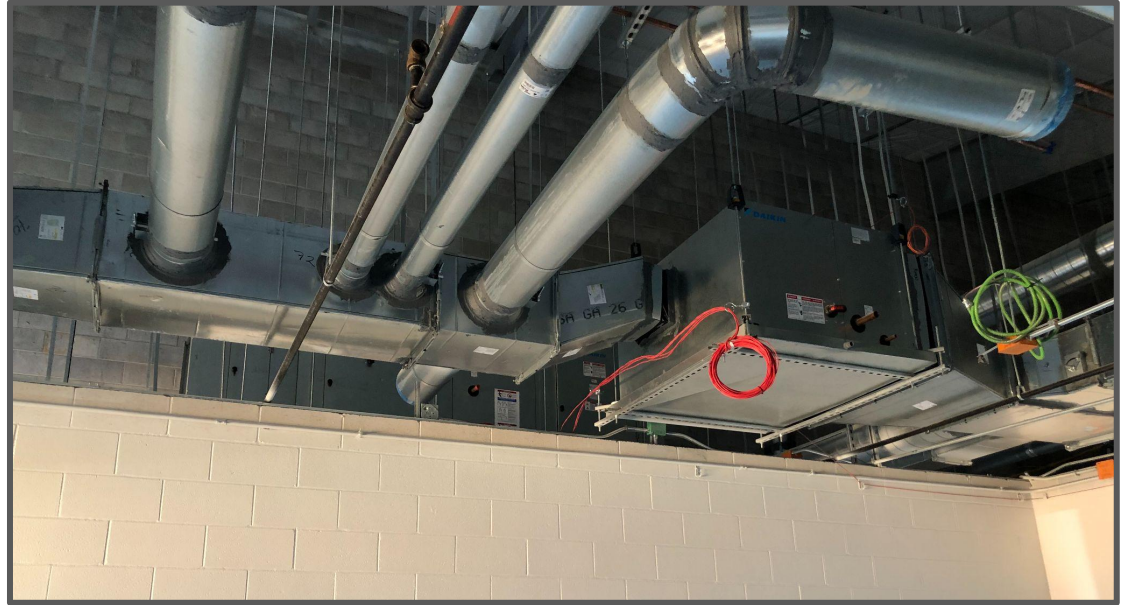


# Ag Barn



Show Arena

# Ag Barn



MEP above ceiling



# Ag Barn



Vet Tech & Animal Science Classrooms

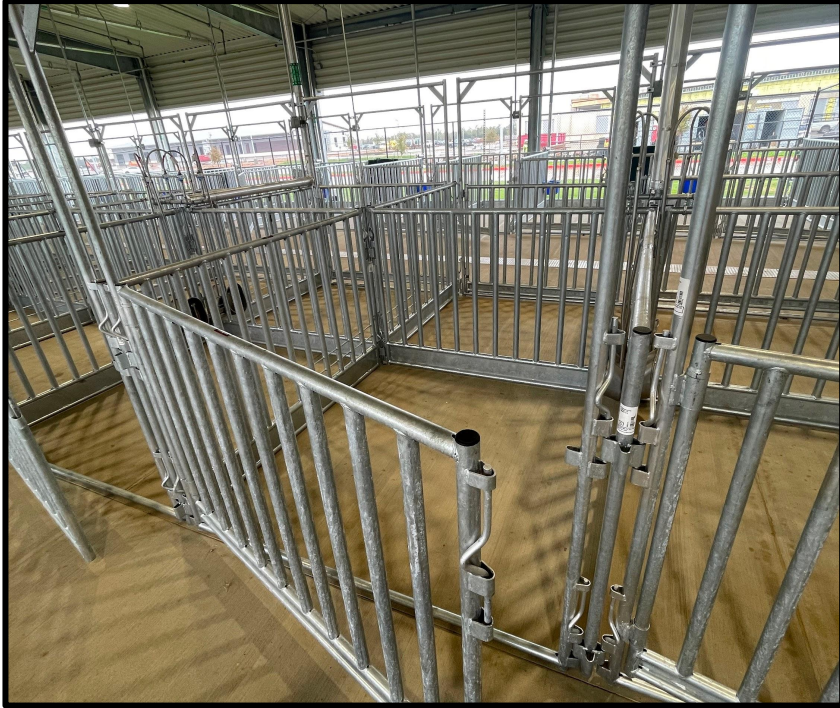
**WALLER ISD**  
**CONSTRUCTION**



Practice Arena



# Ag Barn



Animal Pens



# Ag Barn



Animal Wash & Grooming Spaces





# Ag Barn



Pet Relief and Arena Viewing Areas

# CURE ELEMENTARY





- Exterior brick and stone is nearing completion.
- Tile installation is ongoing.
- MEP overhead installations are ongoing.
- Exterior glazing is nearing completion.
- Door Frame installations are in progress and doors are onsite.
- Restroom partition installations have started.
- Linear ceiling is onsite and installation is started.
- Playground and landscape installations are in progress.

# Cure Elementary



Front Elevation

# Cure Elementary



Front Entry Wall Tile



# Cure Elementary



Corridors





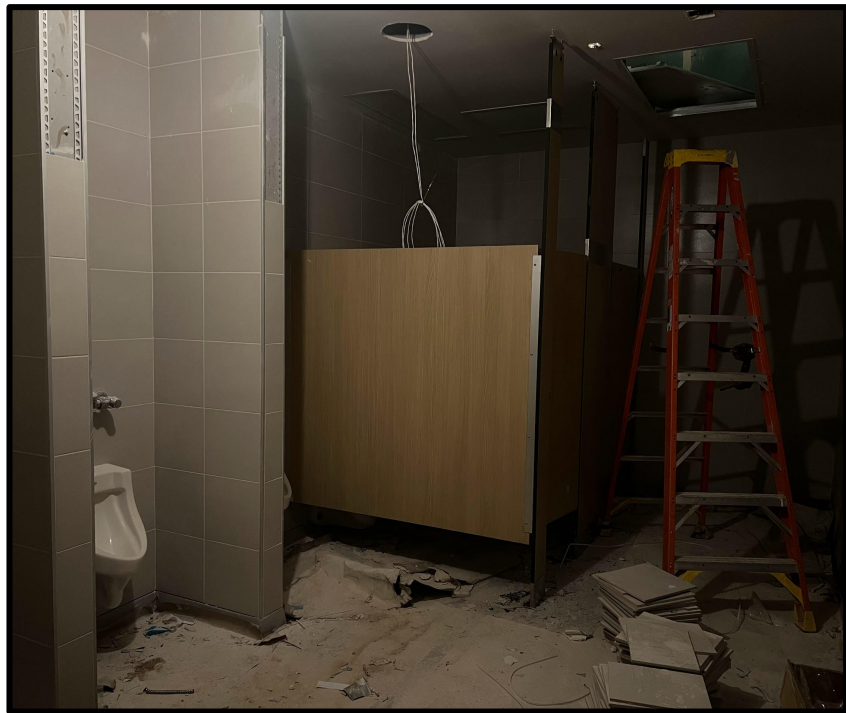
# Cure Elementary



Classrooms



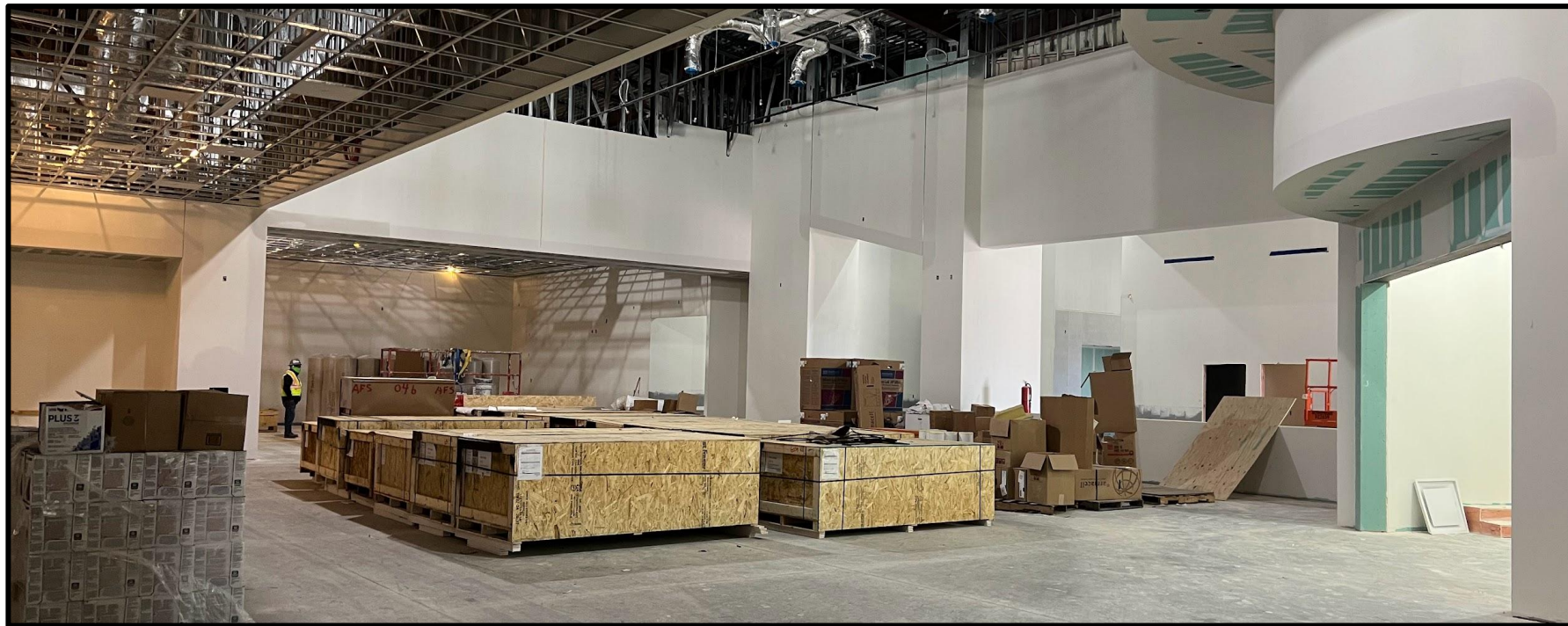
# Cure Elementary



Restrooms and Drinking Fountain



# Cure Elementary



Library

# Cure Elementary



Kitchen



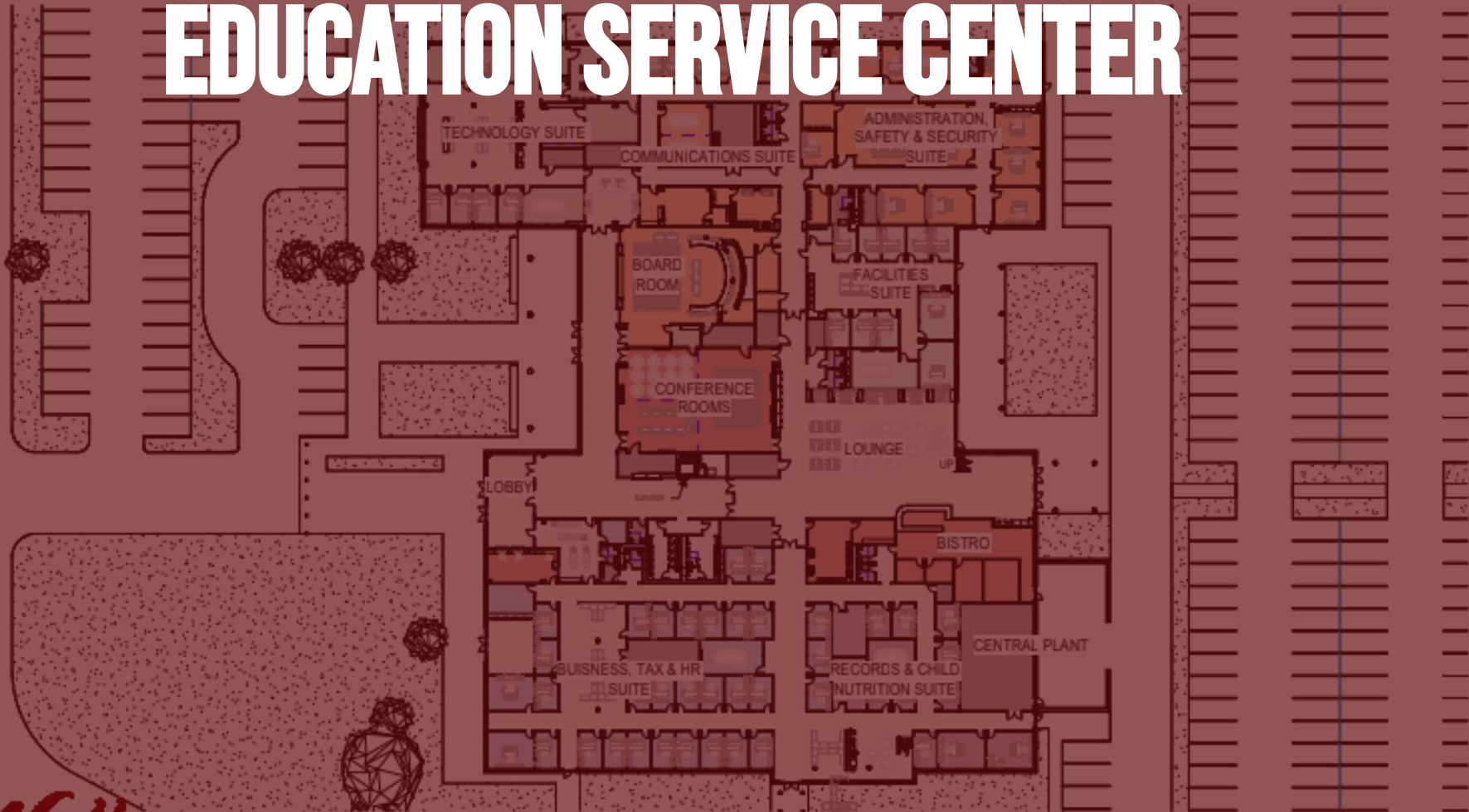


# Cure Elementary



Playground and Landscaping

# EDUCATION SERVICE CENTER



- Exterior masonry is nearing completion and glazing is in progress.
- MEP overhead installations continue to progress.
- Interior wall framing is complete and drywall is nearing completion.
- Interior masonry at the board room is in progress.
- Tiling in restrooms is ongoing.
- Installation of the canopy between the ESC and Transportation has started.
- Fuel pumps are installed at the Fueling Station.



# ESC-Ag-Cure Elementary



Aerial View - Southwest Corner



# Education Service Center



Exterior



# Education Service Center



Exterior Glazing



# Education Service Center



Boardroom



# Education Service Center



Large Conference Rooms





# Education Service Center



Bistro



# Education Service Center



Offices



# Education Service Center



East Elevation and Canopy to Transportation





Front entry and Side Elevations





Dispatch and Bus Driver Lounge



Offices



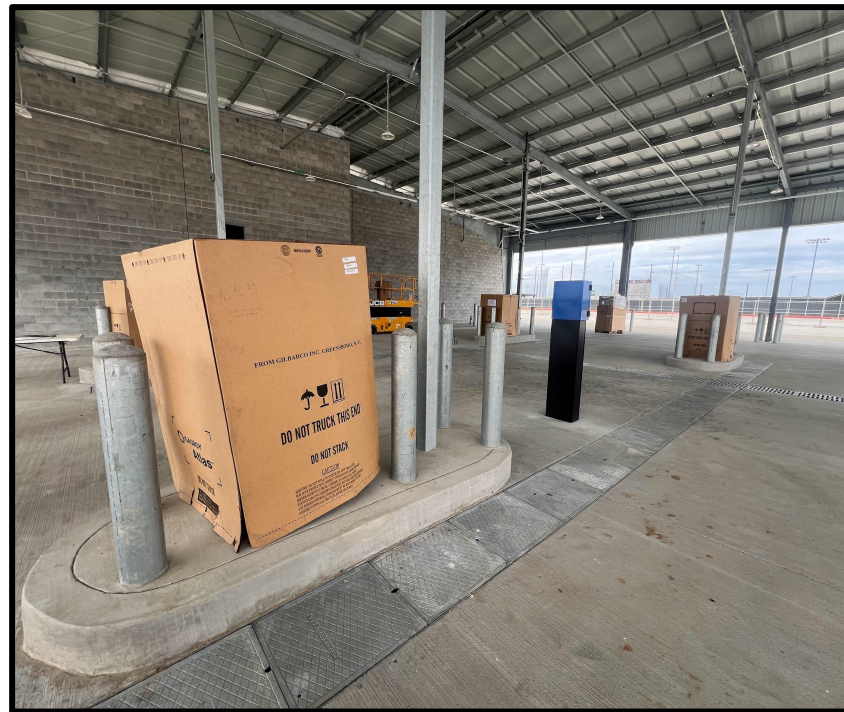


Bay Area





Fueling Station



# PRIORITY 1 PROJECTS



# Priority 1 Improvement

---

- Reroof of Schultz, Holleman, and Roberts Road are due to be completed in early February.
- Security fencing fabric installation has been completed at P1 campuses with gate hardware on order.
- Sliding marker boards installation at Jones ES have been completed.
- Security Signage installation has started at all the P1 campuses.
- Roberts Road front office demolition plan has begun.
- Interior lighting upgrades will begin in January.
- Package 2 GMP, Summer 2025 work, is being finalized for approval.



# Priority 1 Improvement



Schultz JH Roofing

# Priority 1 Improvement



RRE Wall Panels



# Priority 1 Improvement



Roberts Road Elem. Demolition

# Priority 1 Improvement



Roberts Road Elem. Demolition



# Priority 1 Improvement



WJH Field House Demolition

# Priority 1 Improvement



Fencing and Gates



# 2024 - \$702 M BOND



- Warren Ranch High School (#2) - Design starting, opens in summer 2028
- Johnson Junior High School (#3) - Planned opening 2029
- Elementary #9 - Planned opening 2027
- Elementary #10 - Planned opening 2028



A photograph of a classroom filled with children of various ages, from young children to teenagers. They are all expressing excitement, with many having their arms raised in the air. They are seated at small, light-colored tables with blue chairs. The room has white walls, a tiled ceiling, and educational posters on the wall. The entire image is overlaid with a semi-transparent red filter.

# #ThankYouVoters

*Waller*  
Independent School District